



OHIO CHOOSE SAFE PLACES

Information for Licensing Specialists

March 11, 2019

Introduction

Since 2017, the Ohio Department of Health (ODH) has been developing a program to help child care center operator applicants make safer siting decisions with regard to environmental hazards and toxic chemicals. ODH has coordinated with ODJFS, ODE, and OEPA to develop this program.

The purpose of this training is to assist licensing specialists in knowing how they can participate in ensuring that child care staff and patrons are protected from health hazards.



Contents

- Background
- OCSP Program Design
- Licensing Specialist Role

BACKGROUND



Health Assessment Section

ATSDR's Partnership to Promote Local Efforts to Reduce Environmental Exposure (APPLETREE) cooperative agreement program



Mission: “...to **evaluate environmental hazards** from waste sites, industrial spills, and other sources, and to **prevent negative human health effects** from exposure to environmental hazards.”

Toxins and Children: Did You Know?

Children are **more likely to be exposed** to many hazardous substances than adults

Children are **more at risk of having health problems** from exposure to environmental hazards than adults

Few/no regulations protect early care and education centers from being built on contaminated sites



What is Exposure?

A chemical in the environment enters a person's body through:

Inhalation

Ingestion

Dermal

Whether a person gets sick from chemical exposure depends on:

Dose (How much)

Duration (How long)

Frequency (How often)

Individual factors (age, health, lifestyle)

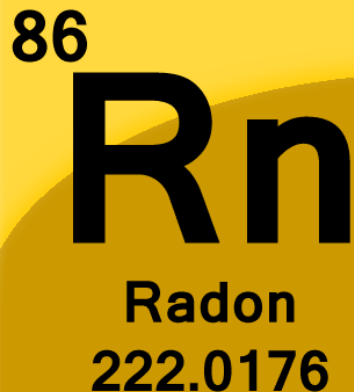
Common Toxins in Ohio

A photograph showing several items of clothing, including a dark jacket and a light-colored shirt, hanging on a rack and covered in clear plastic bags. This is a common method for storing or transporting items that may be contaminated with volatile organic compounds.

**Volatile
Organic
Compounds**

A photograph of laboratory glassware, including a graduated cylinder and a beaker, containing a clear liquid. This represents heavy metals, which are often found in industrial or laboratory settings.

Heavy Metals

A yellow card representing the element Radon (Rn) from the periodic table. It includes the atomic number 86, the symbol Rn, the name Radon, and the atomic weight 222.0176.

**86
Rn
Radon
222.0176**

A photograph of a dense, bright green algal bloom covering a surface of water. This is a common environmental toxin found in Ohio's water bodies.

**Harmful
Algal
Blooms**

Case Study: Laugh and Learn

Background: Former gas station renovated, but petroleum-contaminated soil left behind

Issues: Chemical vapors associated with crude oil, including benzene, in the indoor air

Lesson Learned: With better awareness when choosing their location, the operator might have chosen a safer site for their business and avoided exposure to harmful chemicals.



OCSP PROGRAM DESIGN



Ohio Choose Safe Places

Ohio Choose Safe Places (OCSP) is an **education-based, non-regulatory** program which aims to help **potential operators** of early care and education programs **make safer choices about where to site** their facilities early on in the process of getting established and licensed.

Four Key Elements

1. Former Site Use



Four Key Elements

1. Former Site Use
2. Neighboring Industries



Four Key Elements

1. Former Site Use
2. Neighboring Industries
3. Naturally-Occurring Contamination



Four Key Elements

1. Former Site Use
2. Neighboring Industries
3. Naturally-Occurring Contamination
4. Drinking Water



Timeline

2017 – Phase 1

Forming
Partnerships

2019 – Phase 3

Pilot Program

2018 – Phase 2

Program
Planning

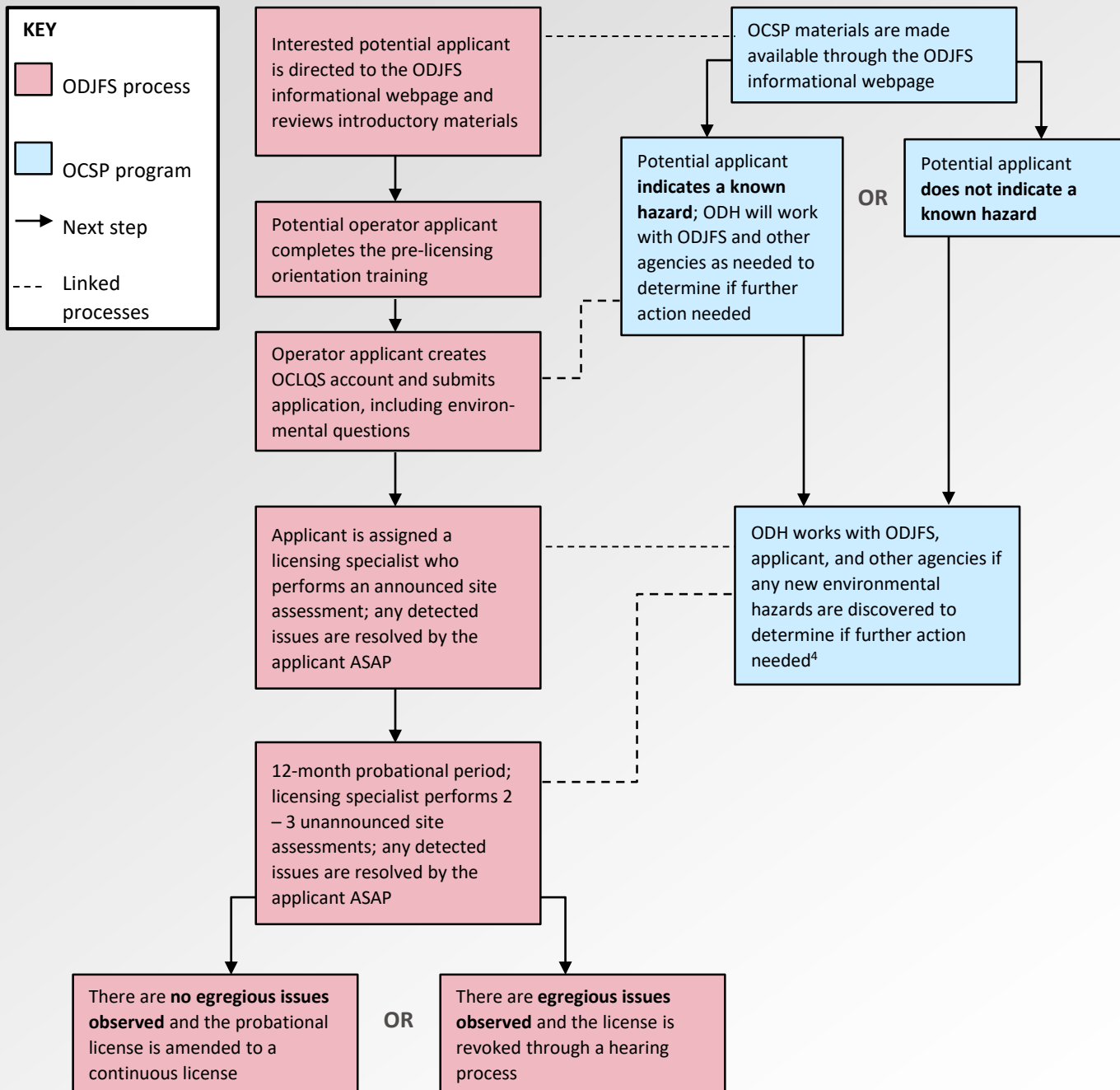
2020 (and
on) –
Phase 4

Continual
Program

OCSP Pilot Program Design

- **Focus Population:** All child care centers (CCCs) in Ohio that are either first-time applicants, re-applying as part of a change of ownership, and/or re-applying as part of a change of location
- **Duration:** April 1, 2019 – March 31, 2020





OCSP Resources

1. OCSP Factsheet
2. ODH Environmental Hazard Questionnaire
3. Licensing Specialist Awareness Training
4. Environmental Resources Guide
5. Contact Directory

[OCSP Webpage](#)

OCSP Webpage



WHO WE ARE
ABOUT US

KNOW OUR
PROGRAMS

HEALTH RULES
LAWS & FORMS

EXPLORE
DATA & STATS

FIND LOCAL
HEALTH
DISTRICTS

A→Z
INDEX



ODH / Know Our Programs / Health Assessment Section / Ohio Choose Safe Places



Health Assessment
Section

WELCOME

QUESTIONS

RESOURCES

FORMS

Ohio Choose Safe Places

November 13, 2018 | [ODH](#)

What is Ohio Choose Safe Places?

Ohio Choose Safe Places (OCSP) is a non-regulatory, education-based statewide initiative designed to help child care center operators protect staff and children from harmful environmental hazards and chemical toxins by making safe siting decisions for their child care facility. In particular, the OCSP initiative seeks to address the following environmental issues:

- **Former use of the site.** Has a building or plot of land that has been chosen to host a childcare center ever been used for purposes that may have caused toxic chemicals to be present at the site? Some former uses which may be cause for concern include hair and/or nail salon, dry cleaner, funeral home, shooting range, warehouse that stored toxic chemicals or heavy metals like mercury, landfill, scrapyard, and Superfund/Brownfields site. Additionally, underground storage tanks can sometimes present an environmental health risk. Potential childcare center operators are encouraged to find out as much as they can about the history of their site.
- **Nearby sites and nearby activities.** Sometimes, neighboring businesses or industries can present an environmental health risk if they are currently misusing or improperly disposing of toxic chemicals. Some neighboring industries which may be cause for concern include hair and/or nail salon, dry cleaner, funeral home, shooting range, gas station, agriculture or farmland, landfill, scrapyard, and Superfund/Brownfields site. It's important to note that **not all** industries that use toxic chemicals as a routine part of their businesses will cause contamination. Potential childcare center operators are encouraged to know what kinds of businesses and industries neighbor their site and to know whether

Share this



External Resources

[ATSDR Choose Safe Places for Early Care and Education \(CSPECE\)](#)

[Ohio Department of Job and Family Services \(ODJFS\) Child Care in Ohio](#)

OCSP Webpage

An Official Site of [Ohio.gov](#)



WHO WE ARE
ABOUT US

KNOW OUR
PROGRAMS

HEALTH RULES
LAWS & FORMS

EXPLORE
DATA & STATS

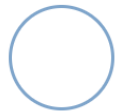
FIND LOCAL
HEALTH
DISTRICTS

A→Z
INDEX

?

Q

ODH / Know Our Programs / Health Assessment Section / Ohio Choose Safe Places



Health Assessment
Section

WELCOME

QUESTIONS

RESOURCES

FORMS

Ohio Choose Safe Places

November 13, 2018 | [ODH](#)

What is Ohio Choose Safe Places?



Understanding the Issues



Who Participates in OCSP?



What Should I Do?



Resources for Child Care Center Operator
Applicants



Resources for Licensing Specialists and Facility
Inspectors



Contact Us



Share this



External Resources

[ATSDR Choose Safe Places for Early Care and
Education \(CSPECE\)](#)

[Ohio Department of Job and Family Services
\(ODJFS\) Child Care in Ohio](#)

OCSP Environmental Questionnaire

Ohio Choose Safe Places Environmental Questionnaire

* 1. What type of early care and education center are you seeking to open?

☐ Home Care Type A

☐ Home Care Type B

☒ Child Care Center

☐ Other (Day camp, preschool, etc.)

PREV

NEXT

Powered by



See how easy it is to [create a survey](#).

LICENSING SPECIALIST ROLE



Licensing Specialists Should...

- **Be aware of the OCSP program** and anticipate that you may get some questions.
- **Know who to contact** when certain questions come up, or where to direct applicant operators with questions.
- **Report anything you think may be hazardous based on the four key elements of the OCSP program**, like seeing a nearby industry that you think may pose a problem or noticing peeling paint.

Licensing Specialists Should NOT...

- **Feel like they have to be the expert on environmental hazards**, or that they have to determine for the operator applicant whether something is or is not a hazard.

You May Be Wondering...

“There is a new child care center in my case load right now that’s being located next door to a dry cleaner (or nail salon, automotive shop, etc). What should I do? Is it unsafe for the center to operate here?”

You May Be Wondering...

“There is a new child care center in my case load right now that’s being located next door to a dry cleaner (or nail salon, automotive shop, etc). What should I do? Is it unsafe for the center to operate here?”

There is no need to make any changes to your current inspection processes. If you have concerns about the siting of a child care center, please reach out to your supervisor.

OCSP materials will be available online for operator applicants beginning in April 2019.

You May Be Wondering...

“How can I know if a child care center is located above an underground storage tank, if it has radon, if it has lead water service lines, or if it has any other invisible environmental issue?”

You May Be Wondering...

“How can I know if a child care center is located above an underground storage tank, if it has radon, if it has lead water service lines, or if it has any other invisible environmental issue?”

Licensing specialists can't know about issues they can't see.

The responsibility of safe siting falls primarily on the child care center operator applicant.

Contact Information

Ohio Department of Health
Health Assessment Section

(614) 728-9452

BEH@odh.ohio.gov

<https://odh.ohio.gov/has>

Abbreviation Key

ATSDR	-	Agency for Toxic Substances and Disease Registry
CCC	-	Child care center
CSPECE	-	Choose Safe Places for Early Care and Education
HAS	-	Health Assessment Section
OCSP	-	Ohio Choose Safe Places
ODH	-	Ohio Department of Health
ODJFS	-	Ohio Department of Job and Family Services
OEPA	-	Ohio Environmental Protection Agency